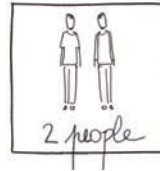


# WALLPAPER



## USER MANUAL

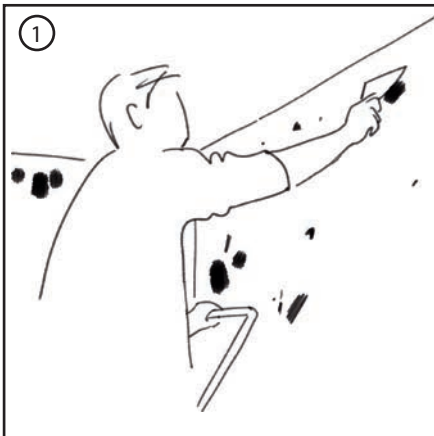
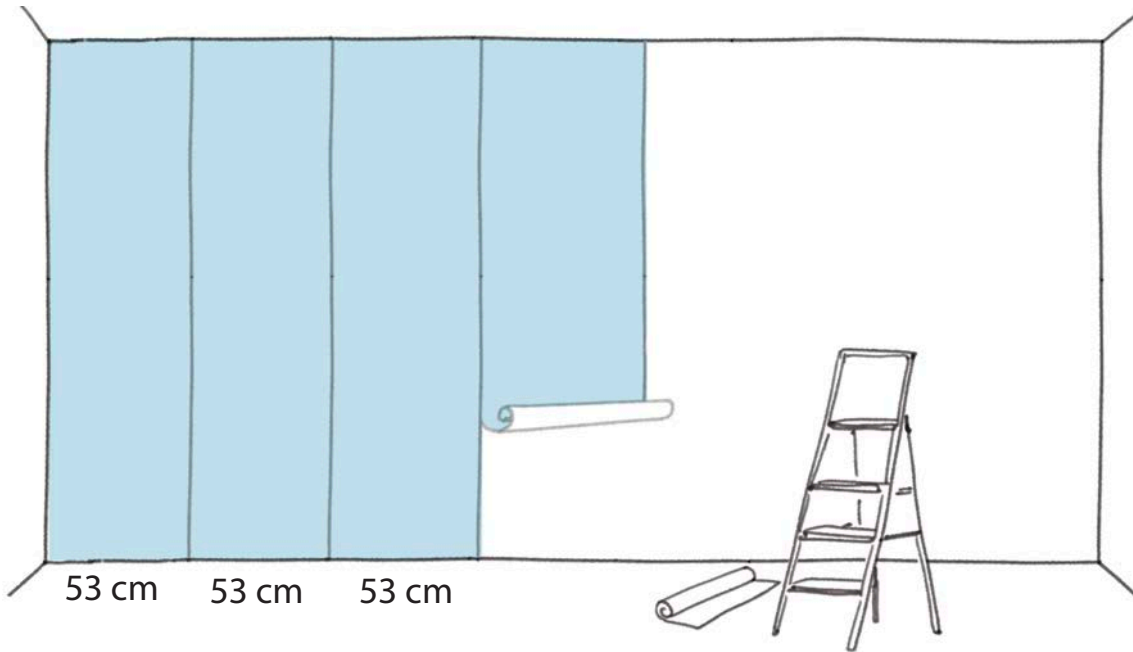
Ref22 / NOSC22 UNIS



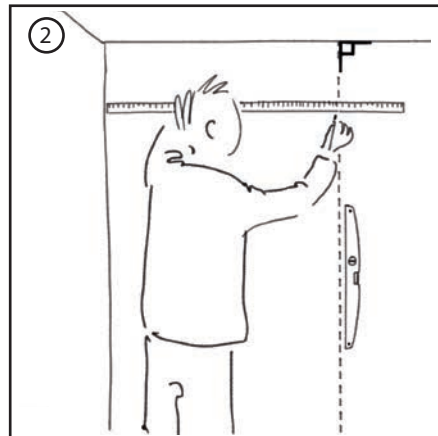
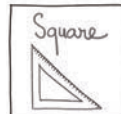
Materials needed



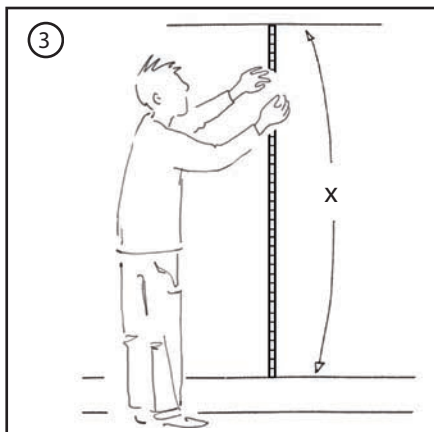
Non-woven paper, Vinyl on non-woven  
Format 53 x 1000 cm



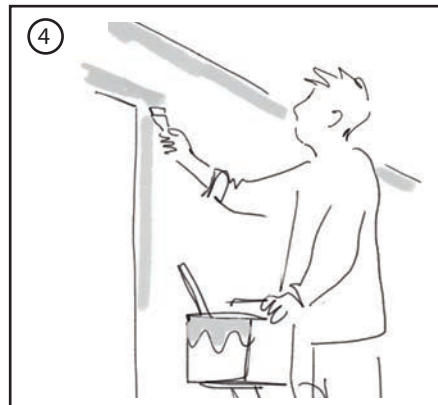
① Prepare the surface : fill in the holes. Remove the socket covers and switches.



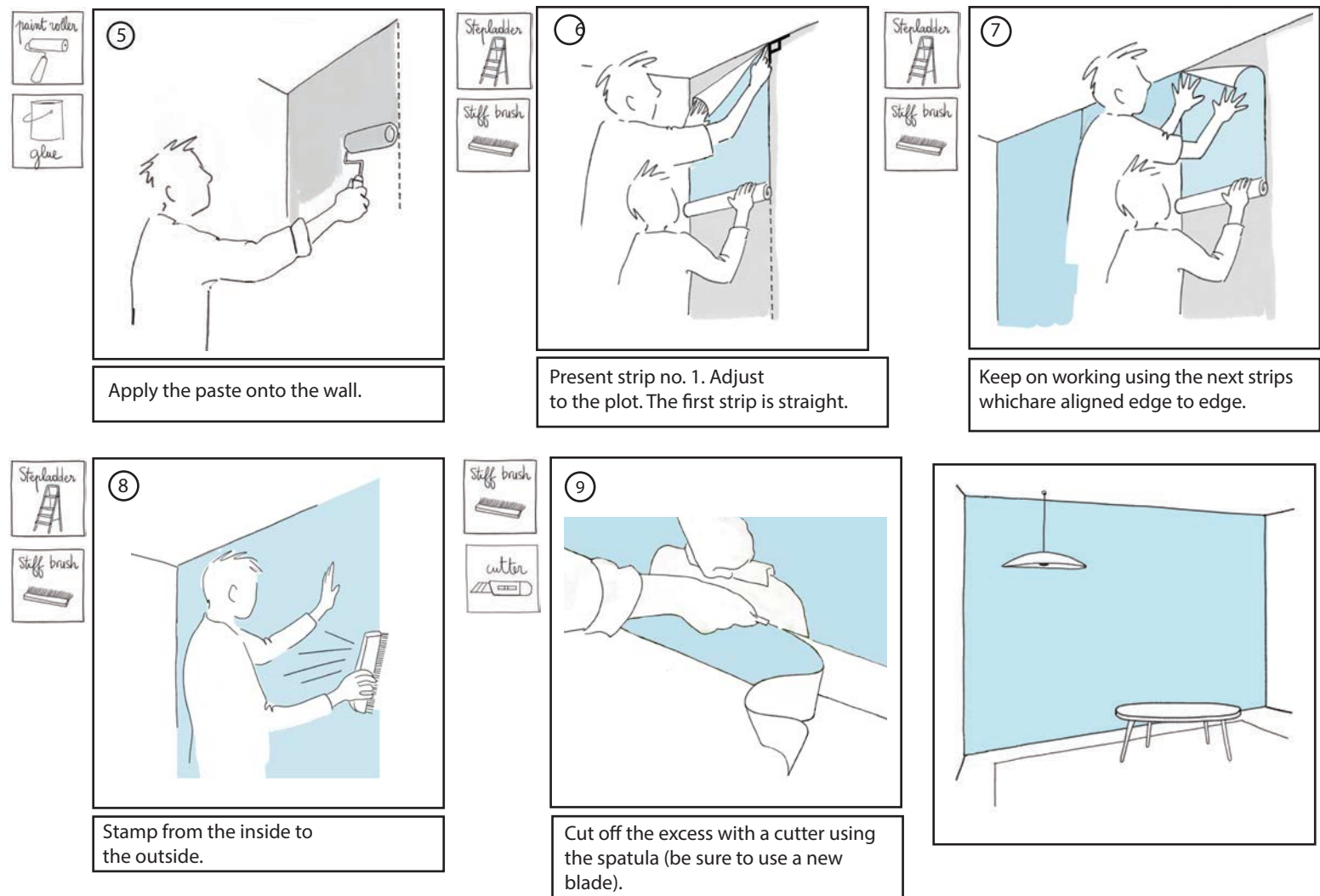
② Measure the width of the first strip. Use a level to draw the dotted lines.



③ Measure the areas to be covered. Check that the ceiling is straight.



④ The sensitive parts of the wall need to be glued : wall, door frame/top and bottom edges.



Important note: It is advisable to check the batch numbers before installation.

#### WHAT TYPE OF PASTE SHOULD I USE?

##### NON-WOVEN PAPER :

Our non-woven backing can be applied with any powdered adhesive intended for non-woven wallpapers on a normally absorbent surface.. We recommend to use METYLAN Expert paste.

To get a very strong hold, you can use a white glue that is ready-to-use.

SCENOLIA recommends that you use the following white glue s:

- 1/ For application on a normally absorbent surface (plaster, BA13, etc.): OVALIT TM
- 2/ For application on a non-absorbent surface (melamine, blocked paints, etc.): OVALIT ULTRA

##### TEXTILE BACKING :

To apply our textile backing, we recommend using a white paste available in DIY stores and wallpaper specialized shops....

SCENOLIA recommends that you use the following white pastes :

- 1/ For installation on a normally absorbent open base (plaster, BA13, etc.): OVALIT TM
- 2/ For installation on a non-absorbent base (melamine, blocked paint, etc.): OVALIT ULTRA

SCENOLIA cannot be held responsible if you fail to comply with the recommendations.

**Application :** powder and white pastes can be applied directly to the wall with a simple wool painting roll (anti-drip painting roll).

Make sure that the pastes used are suitable for your wall. Refer to the recommendations of the wallpaper paste manufacturers and DTU 59-4.

Warning: for installation in damp environments (kitchen, bathroom, SPA, etc...) check that the textile material is a suitable reference.

Do not install in areas where water is splashed.

SCENOLIA cannot be held responsible if you fail to comply with the recommendations.



Find our videos of installation on our channel YouTube

SCENOLIA   
www.scenolia.com